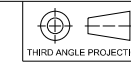
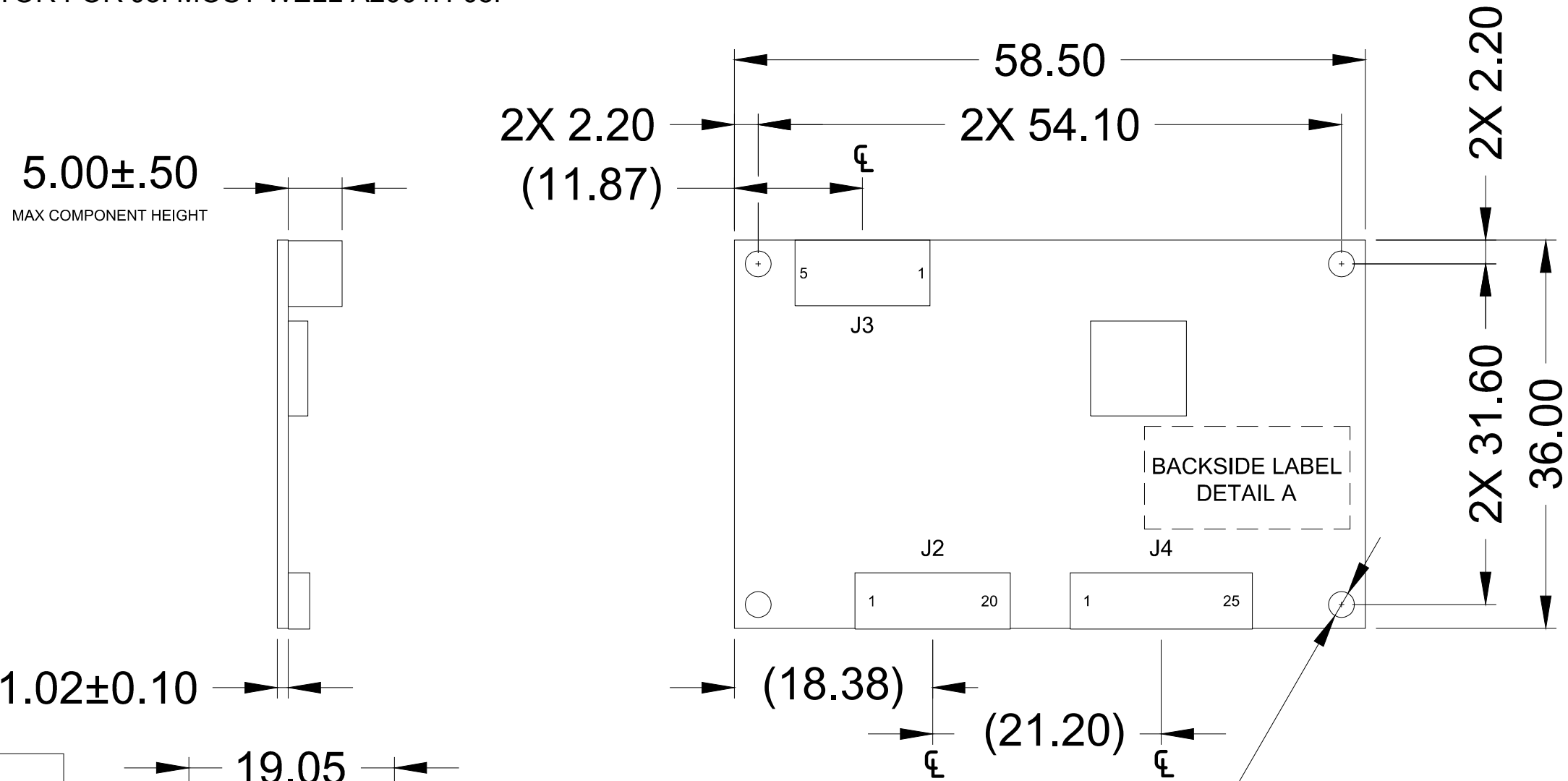


NOTES:

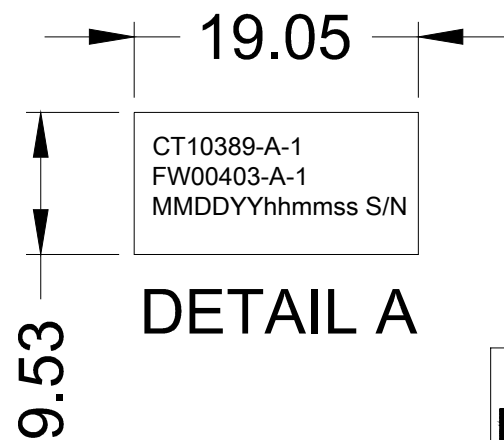
1. CONNECTOR FOR J2: MOST WELL MWFPC05PSN-H20-20
2. CONNECTOR FOR J4: MOST WELL MWFPC05PSN-H20-25
3. CONNECTOR FOR J3: MOST WELL W2000-R2051221
4. MATING CONNECTOR FOR J3: MOST WELL A2001H-05P



REVISIONS				DWN	DATE
ITEM REV	DWG REV	ECO	DESCRIPTION		
A	1	-	INITIAL RELEASE.	CPO	12-18-15



J3	
PIN	FUNCTION
1	GROUND
2	USB_5V
3	GROUND
4	D+
5	D-



4X Ø2.40 MOUNTING HOLE



THIS CONFIDENTIAL DOCUMENT IS THE PROPERTY OF DAWAR TECHNOLOGIES, INC. AND SHALL NOT BE COPIED, REPRODUCED, DISCLOSED, AND/OR USED AS THE BASIS FOR MANUFACTURING OR SALE WITHOUT PERMISSION OF A DULY AUTHORIZED REPRESENTATIVE OF DAWAR TECHNOLOGIES, INC.

FIRMWARE FW00403-A-1		ITEM/DRAWING NO. CT10389-A		DWG REV 1	
DESCRIPTION ATMEL PCB - 1664T3 USB 20x25 PCAP CONTROLLER (DW01837)	UNIT mm [INCH]	TOLERANCE ±0.25 [0.010] UNLESS SPECIFIED	SHEET 1 OF 1	DRAWN BY OSTROWSKI	DATE 12-18-15