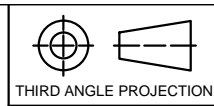
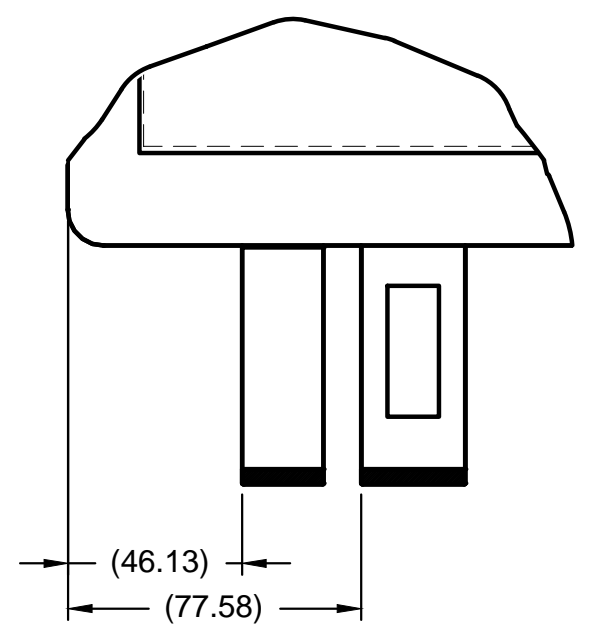


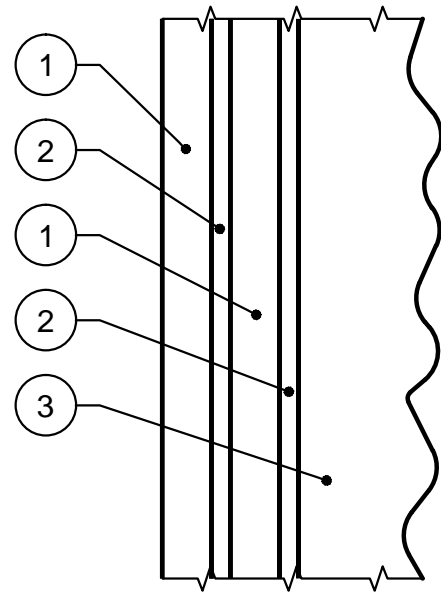
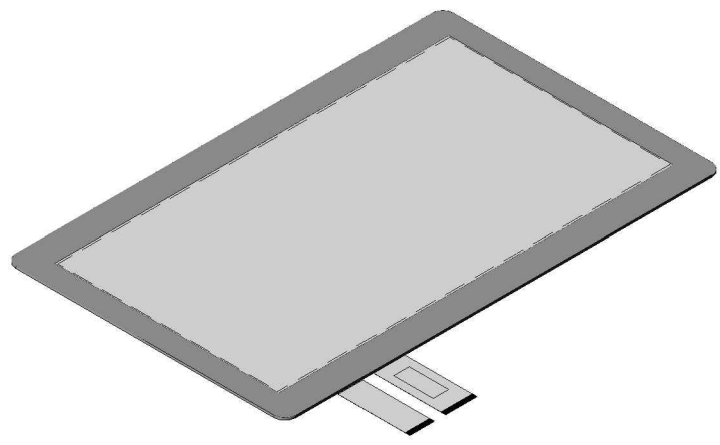
| BILL OF MATERIALS |                         |     |
|-------------------|-------------------------|-----|
| ITEM              | DESCRIPTION             | QTY |
| 1                 | 0.13 mm CONDUCTIVE FILM | 2   |
| 2                 | 0.05 mm OCA             | 2   |
| 3                 | 1.9 mm COVER LENS       | 1   |



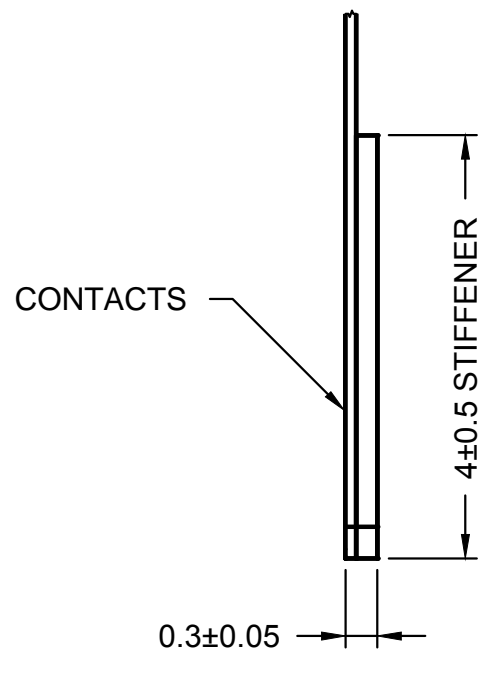
| REVISIONS |         |     |                  |     |          |
|-----------|---------|-----|------------------|-----|----------|
| ITEM REV  | DWG REV | ECO | DESCRIPTION      | DWN | DATE     |
| A         | 1       | -   | INITIAL RELEASE. | WPD | 10-12-15 |



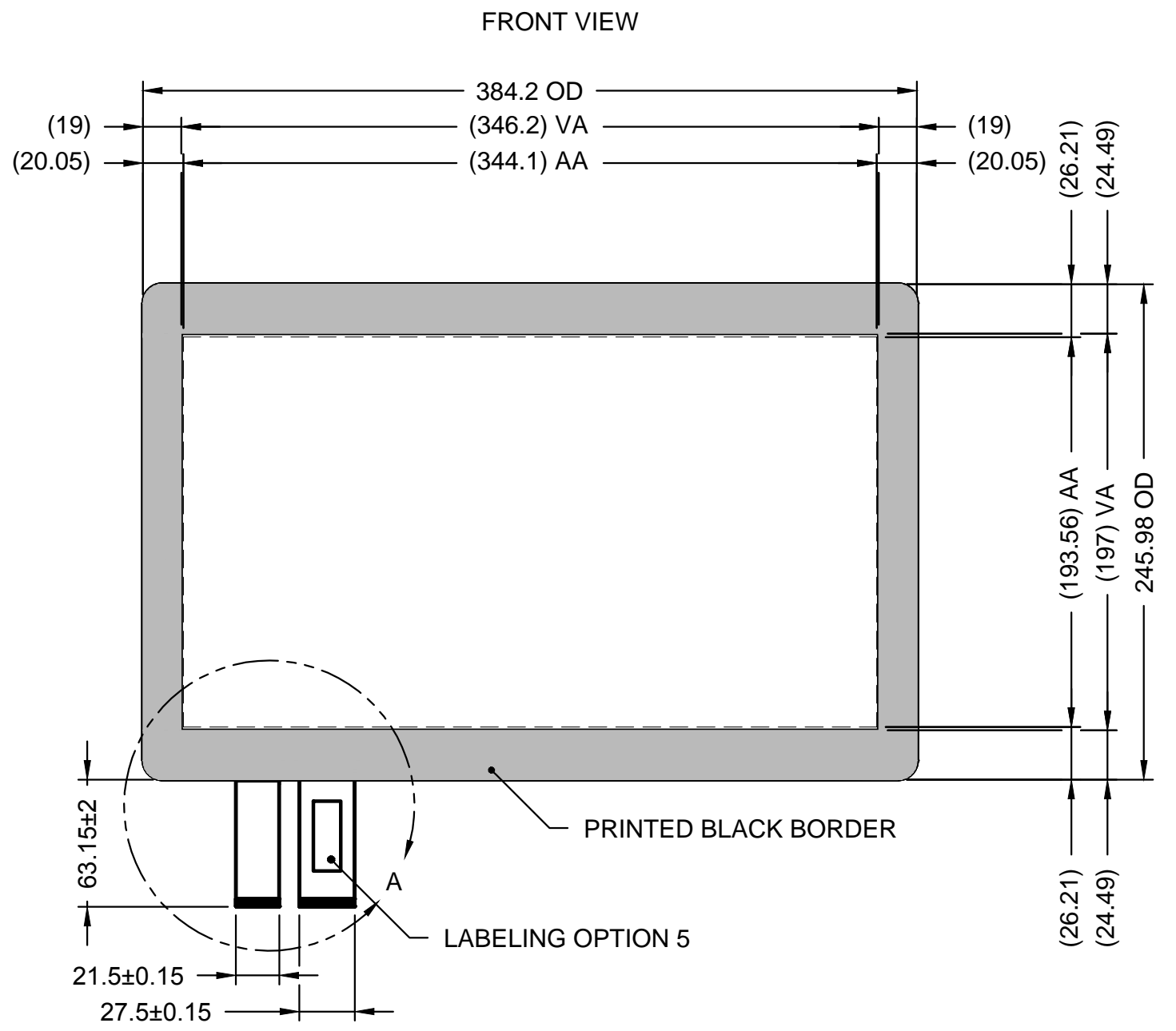
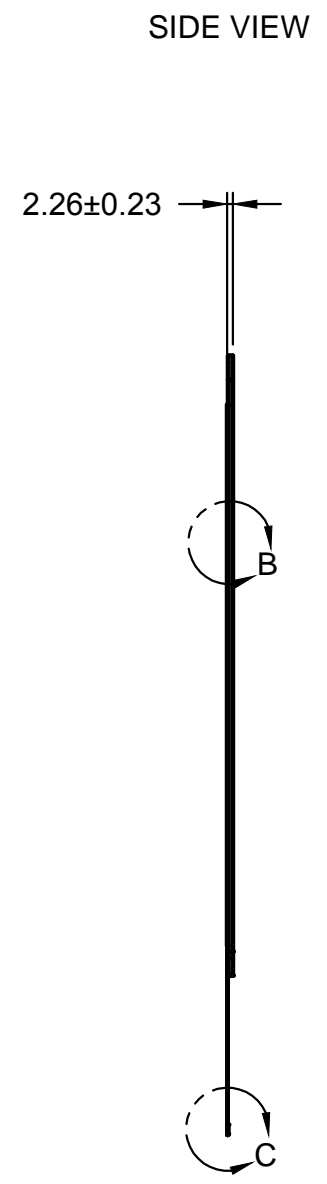
DETAIL A  
SCALE 1:2



DETAIL B  
SCALE 50:1



DETAIL C  
SCALE 14:1



- NOTES:
1. TAIL TYPE-FPC GOLD PLATED.
  2. PART IS ROHS COMPLIANT.
  3. DIMENSIONS IN PARENTHESIS ARE FOR REFERENCE ONLY.
  4. SENSOR SPECIFICATION PER QAD 19-6 (CURRENT REVISION).
  5. COVER LENS:  
MATERIAL - CHEMICALLY STRENGTHENED SODA LIME GLASS  
EDGE PROFILE - PENCIL GROUND

|   |  |                  |                   |   |                       |                 |
|---|--|------------------|-------------------|---|-----------------------|-----------------|
| <p>1016 North Lincoln Avenue, Pittsburgh, PA 15233<br/>1.800.366.1904 - 412.322.9900 - Fax: 412.322.9958<br/>e-mail: sales@dawar.com - www.dawar.com</p> <p><small>THIS CONFIDENTIAL DOCUMENT IS THE PROPERTY OF DAWAR TECHNOLOGIES, INC. AND SHALL NOT BE COPIED, REPRODUCED, DISCLOSED, AND/OR USED AS THE BASIS FOR MANUFACTURING OR SALE WITHOUT PERMISSION OF A DULY AUTHORIZED REPRESENTATIVE OF DAWAR TECHNOLOGIES, INC.</small></p> |  | STANDARD PRODUCT |                   | MARKETING P/N<br>GFF-15.6W-00002            | ITEM NO.<br>DW01834-A | DWG REV<br>1    |
|   |  | SCALE<br>1:3     | UNIT<br>mm [INCH] | TOLERANCE<br>±0.25 [0.010] UNLESS SPECIFIED |                       | SHEET<br>1 OF 2 |
| DESCRIPTION<br>15.6"W PROJECTED CAPACITIVE GFF TOUCHSCREEN  |  |                  |                   |   |                       |                 |

| J1  |          |
|-----|----------|
| PIN | FUNCTION |
| 1   | GND      |
| 2   | DS0      |
| 3   | X0       |
| 4   | X1       |
| 5   | X2       |
| 6   | X3       |
| 7   | X4       |
| 8   | X5       |
| 9   | X6       |
| 10  | X7       |
| 11  | X8       |
| 12  | X9       |
| 13  | X10      |

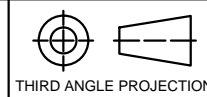
|    |     |
|----|-----|
| 14 | X11 |
| 15 | X12 |
| 16 | X13 |
| 17 | X14 |
| 18 | X15 |
| 19 | X16 |
| 20 | X17 |
| 21 | X18 |
| 22 | X19 |
| 23 | X20 |
| 24 | X21 |
| 25 | X22 |
| 26 | X23 |
| 27 | X24 |
| 28 | X25 |

|    |     |
|----|-----|
| 29 | X26 |
| 30 | NC  |
| 31 | NC  |
| 32 | NC  |
| 33 | NC  |
| 34 | NC  |
| 35 | NC  |
| 36 | NC  |
| 37 | NC  |
| 38 | NC  |
| 39 | NC  |
| 40 | NC  |
| 41 | DS0 |
| 42 | GND |

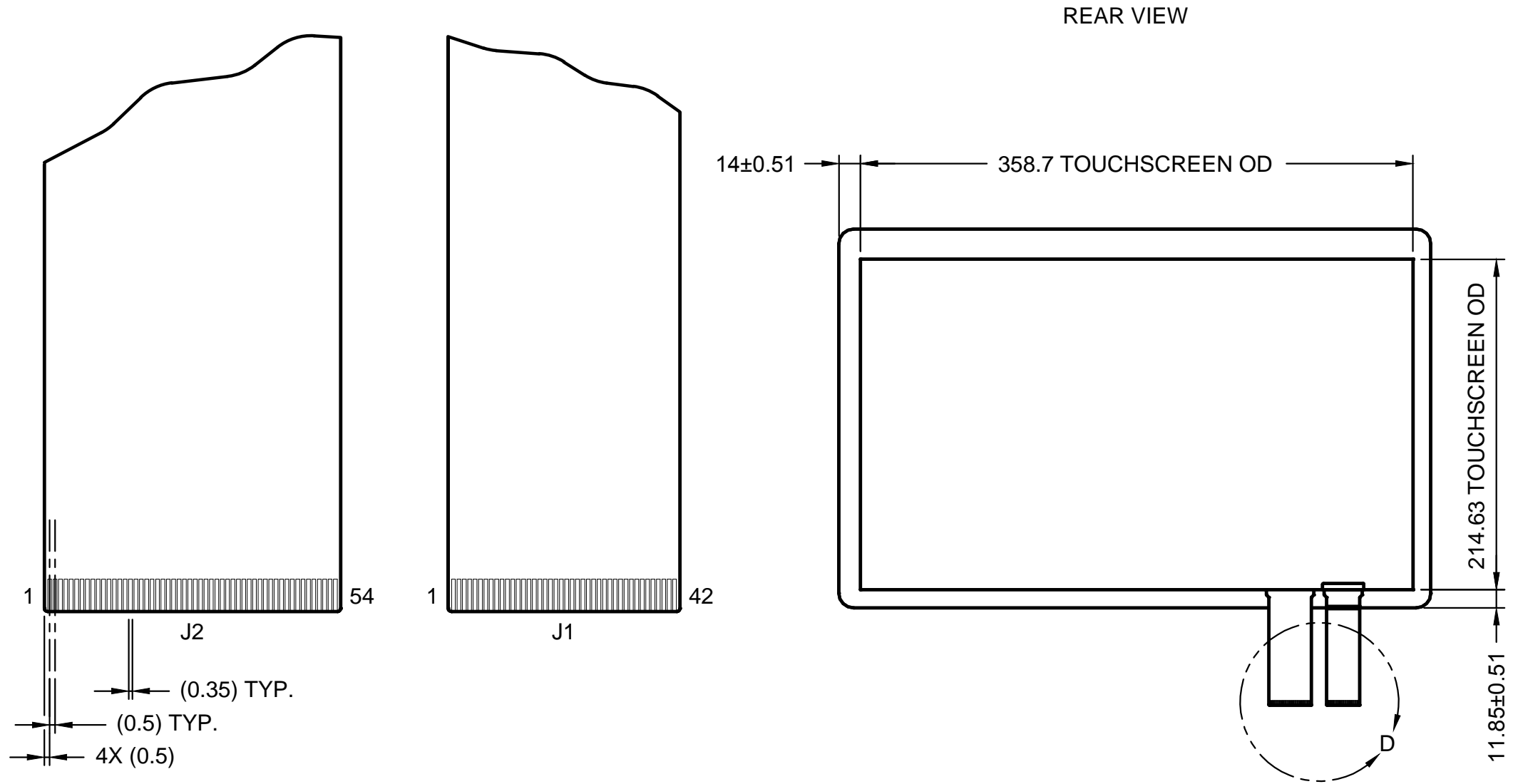
| J2  |          |
|-----|----------|
| PIN | FUNCTION |
| 1   | GND      |
| 2   | Y0       |
| 3   | Y1       |
| 4   | Y2       |
| 5   | Y3       |
| 6   | Y4       |
| 7   | Y5       |
| 8   | Y6       |
| 9   | Y7       |
| 10  | Y8       |
| 11  | Y9       |
| 12  | Y10      |
| 13  | Y11      |
| 14  | Y12      |
| 15  | Y13      |
| 16  | Y14      |
| 17  | Y15      |
| 18  | Y16      |
| 19  | Y17      |

|    |     |
|----|-----|
| 20 | Y18 |
| 21 | Y19 |
| 22 | Y20 |
| 23 | Y21 |
| 24 | Y22 |
| 25 | Y23 |
| 26 | Y24 |
| 27 | Y25 |
| 28 | Y26 |
| 29 | Y27 |
| 30 | Y28 |
| 31 | Y29 |
| 32 | Y30 |
| 33 | Y31 |
| 34 | Y32 |
| 35 | Y33 |
| 36 | Y34 |
| 37 | Y35 |
| 38 | Y36 |
| 39 | Y37 |
| 40 | Y38 |

|    |     |
|----|-----|
| 41 | Y39 |
| 42 | Y40 |
| 43 | Y41 |
| 44 | Y42 |
| 45 | Y43 |
| 46 | Y44 |
| 47 | Y45 |
| 48 | Y46 |
| 49 | NC  |
| 50 | NC  |
| 51 | NC  |
| 52 | NC  |
| 53 | DS0 |
| 54 | GND |



| REVISIONS |         |     |                  |     | DWN      | DATE |
|-----------|---------|-----|------------------|-----|----------|------|
| ITEM REV  | DWG REV | ECO | DESCRIPTION      |     |          |      |
| A         | 1       | -   | INITIAL RELEASE. | WPD | 10-12-15 |      |



DETAIL D  
SCALE 2:1

1016 North Lincoln Avenue, Pittsburgh, PA 15233  
1.800.366.1904 - 412.322.9900 - Fax: 412.322.9958  
e-mail: sales@dawar.com - www.dawar.com

THIS CONFIDENTIAL DOCUMENT IS THE PROPERTY OF DAWAR TECHNOLOGIES, INC. AND SHALL NOT BE COPIED, REPRODUCED, DISCLOSED, AND/OR USED AS THE BASIS FOR MANUFACTURING OR SALE WITHOUT PERMISSION OF A DULY AUTHORIZED REPRESENTATIVE OF DAWAR TECHNOLOGIES, INC.

|   |           |                                |           |              |          |
|---|-----------|--------------------------------|-----------|--------------|----------|
| STANDARD PRODUCT                            |           | MARKETING P/N                  | ITEM NO.  | DWG REV      |          |
|   |           | GFF-15.6W-00002                | DW01834-A | 1            |          |
| SCALE                                       | UNIT      | TOLERANCE                      | SHEET     | DRAWN BY     | DATE     |
| 1:3.5                                       | mm [INCH] | ±0.25 [0.010] UNLESS SPECIFIED | 2 OF 2    | BILL DORFNER | 10-12-15 |
| DESCRIPTION                                 |           |                                |           |              |          |
| 15.6"W PROJECTED CAPACITIVE GFF TOUCHSCREEN |           |                                |           |              |          |